

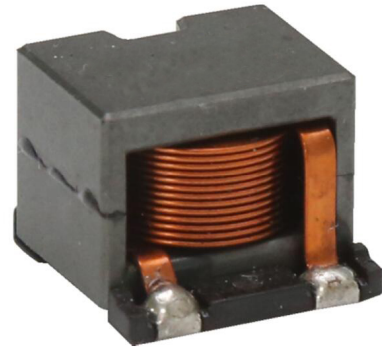
EEC1412

HIGH CURRENT POWER INDUCTOR

大电流功率电感

Features

- Compact size using flat wire, and SMD type.
扁平线小尺寸封装，贴片类型
- Low radiation noise by magnetically shielded construction
闭合磁路封装，低辐射
- High current, Low resistance.
大电流，低电阻
- Operating temperature : -40°C~+125°C.
工作温度：-40°C~+125°C



Applications

- high efficiency DC/DC converters. 高效 DC/DC 转换器
- Single and polyphase buck converters. 单相、多相降压转换器
- Filter for audio applications. 音频滤波应用
- Optimized for high current boost applications. 大电流升压应用优化

Electrical characteristics

Part number 料号	Inductance 电感量 μH	DC resistance 直流电阻 mΩ max.(typ.)	DC saturation current 直流饱和电流 A max.(typ.)			Temperature rise current 温升电流 A max.	
			ΔL ≤ 10%	ΔL ≤ 20%	ΔL ≤ 30%	ΔT ≤ 20°C	ΔT ≤ 40°C
EEC1412-103	10 ± 10%	7.98(6.7)	11.9(13.1)	13.1(13.8)	13.5(14.0)	8.1	10.1
EEC1412-123	12 ± 10%	9.42(7.9)	10.7(12.0)	11.8(12.5)	12.5(13.1)	7.5	9.7
EEC1412-153	15 ± 10%	10.8(9.0)	9.8(11.0)	10.9(11.4)	11.6(12.2)	7.1	9.1
EEC1412-183	18 ± 10%	12.6(10.5)	9.1(10.1)	10.0(10.6)	10.5(11.3)	6.6	8.4
EEC1412-223	22 ± 10%	15.2(12.7)	7.9(8.5)	8.8(9.5)	9.4(9.9)	6.0	7.8
EEC1412-333	33 ± 10%	17.9(14.9)	7.0(7.6)	7.9(8.5)	8.6(9.0)	5.5	7.1
EEC1412-473	47 ± 10%	17.9(14.9)	6.0(6.7)	6.9(7.5)	7.4(7.8)	5.5	7.1

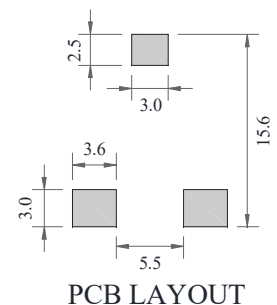
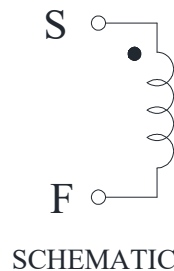
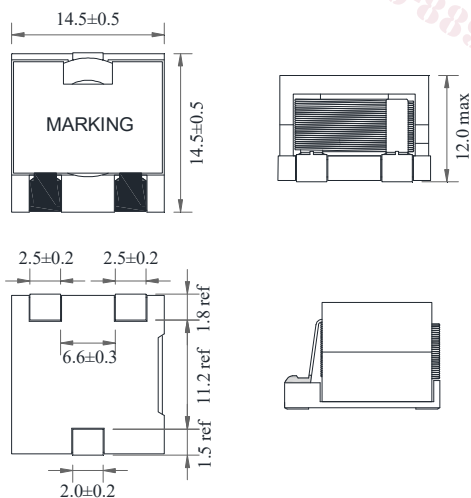
Remark

- Inductance is measured with a LCR meter 4284A or equivalent.
Test frequency at 100kHz
- DC resistance is measured with 16502 Milliohm Meter , or equivalent.
Reference ambient temperature 25°C

备注

- 电感量测试采用 4284A 数字电桥或同等仪器：
测试频率 100KHz
- 直流电阻测试采用 16502 毫欧表或同等仪器：
环境温度 25°C

Dimensions



EEC1412

HIGH CURRENT POWER INDUCTOR

大电流功率电感

Electrical Characteristic Curve

